

GENERAL PURPOSE/SEMI CONDUCTOR

ELECTRICAL:

See table

STANDARDS:

UL recognized file no. IZLT2.E35113

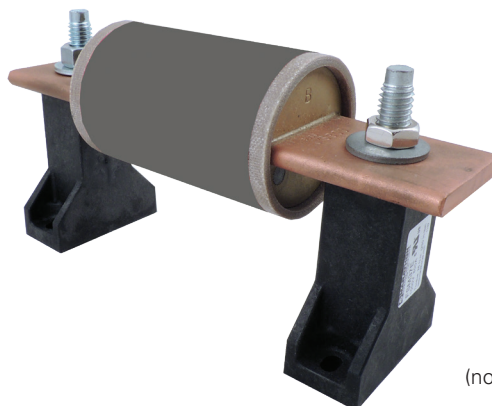
RoHS compliant

WEBSITE RESOURCES:

Dimensional drawings & 3D CAD files

Termination and mounting specifications

Detailed product data sheets



FSM37E
with fuse
(not included)

VOLTS	AMPS	CATALOG # ¹	STUD SIZES ¹	APPLICATION TORQUE	SC WITHSTAND RATING	MOUNTING
Up to 1000V AC/DC	400	FSM25E	1/4"-20 Stud	75 in-lbs	Approved for 200,000A; tested at 111 kA ² s (I ² t) and 20.0 kA (I _p)	#10 fastener, torque to 25-30 in. lbs.
	800	FSM37E	3/8"-16 Stud	230 in-lbs	Approved for 200,000A; tested at 274 kA ² s (I ² t) and 26.2 kA (I _p)	#10 fastener, torque to 25-30 in. lbs.
	1200	FSM50E	1/2"-13 Stud	300 in-lbs	Approved for 200,000A; tested at 465 kA ² s (I ² t) and 30.8 kA (I _p)	1/4" fastener, torque to 25-30 in. lbs.

¹Each item provides one unit

ELECTRICAL:

Amps - see table

600 volts

STANDARDS:

UL recognized file no. IZLT2.E35113

cUR file no. IZLT8.E35113

CE compliant

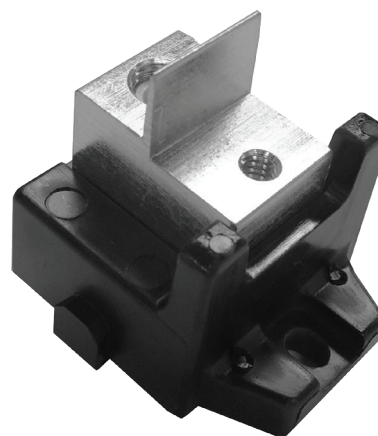
RoHS compliant

WEBSITE RESOURCES:

Dimensional drawings & 3D CAD files

Termination and mounting specifications

Detailed product data sheets



1MS101

VOLTS	MAX AMPS	CATALOG # ¹	WIRE RANGE	FASTENER SIZE	TESTED AT:	
					I ² t	I _p
600	100	1MS101	2/0 - #14	1/4 - 20	193kA	27.4kA
	400	1MS102	(2) 250 kcmil - #6	1/4 - 21	3480 kA	69.5 kA
	400	1MS103	(2) 250 kcmil - #6	3/8 - 16	3480 kA	69.5 kA
	600	1MS104	(2) 500 kcmil - #6	3/8 - 17	2840kA	50.8 kA

¹Each item provides one unit